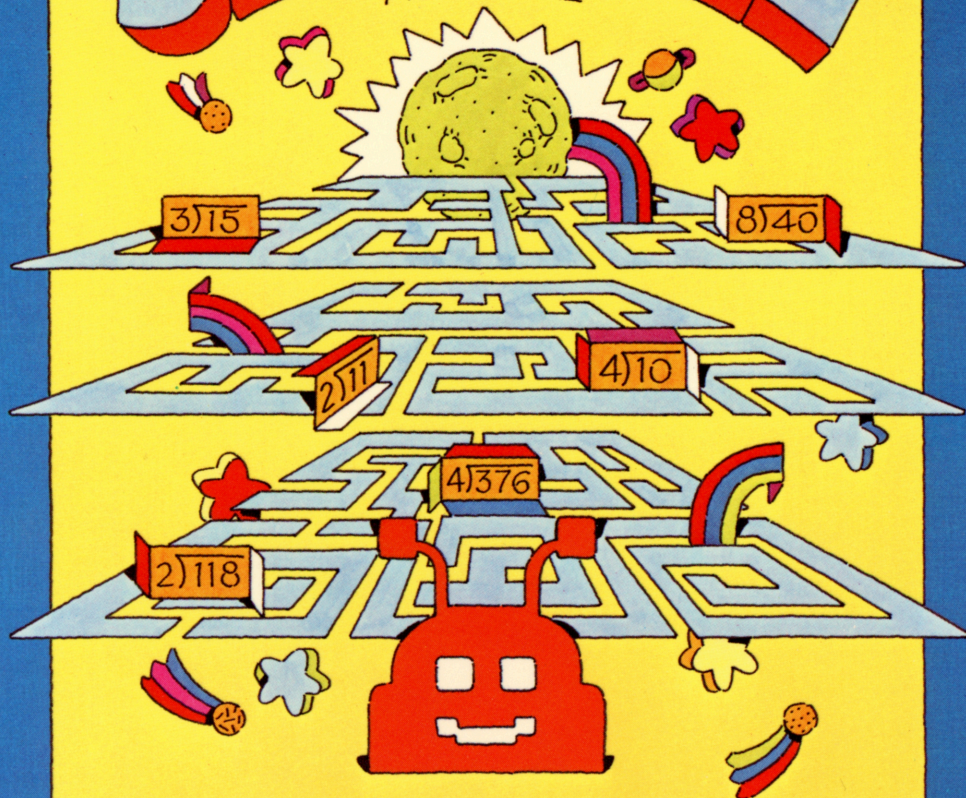


SCOTT, FORESMAN

PRACTICE IN DIVISION

# STAR MAZE

AGES 8-12



MATHEMATICS ACTION GAMES SERIES

For the TI 99/4A microcomputer.

Scott, Foresman

---



# Star Maze

Practice in division

Mathematics Action Games series for use with  
the Texas Instruments 99/4A microcomputer.

Scott, Foresman and Company  
Electronic Publishing Offices: Glenview, Illinois ·  
Regional Offices: Palo Alto, California · Tucker, Georgia  
Glenview, Illinois · Oakland, New Jersey · Dallas, Texas

ISBN: 0-673-31184-8

Copyright © 1983

Scott, Foresman and Company, Glenview, Illinois.

All Rights Reserved.

Printed in the United States of America.

2 3 4 5 6-MAL-86 85 84 83

---

# Contents

About the Module	4
Difficulty Levels	5
Game Description	6
Keyboard Guide	10
Scorecard	11
Related Activities	12
The Mathematics Action Games Series	13
Caring for the Module	14
Warranty	15
Index	16

---

## About the Module

Scott, Foresman and Company, one of the country's leading educational publishers, carefully developed *Star Maze* to create a unique blend of fun and learning. *Star Maze*'s three challenging levels provide hours of enjoyment while providing practice in division skills. This solid state module requires only your Texas Instruments Home Computer and monitor or television set.

Division, which is generally taught in the elementary grades, is an essential skill for both children and adults. *Star Maze*, with its exciting animation and sound effects, motivates players to spend hours practicing this vital mathematics skill. The chart on the next page details the types of division problems covered in this module.

Although directions for *Star Maze* are included in the module, detailed game instructions are printed on pages six to nine in this User's Guide. Players can view the instructions in the module at any time during play by pressing the FCTN and the AID keys simultaneously.

Although the division skills in *Star Maze* are usually taught in the third through sixth grades, younger children with good math skills as well as older children and adults will enjoy the game's challenges and rewards.

*Star Maze* is one of a series of mathematics games designed to supplement mathematics instruction in a variety of skills and at a variety of levels. Enjoy finding your way through *Star Maze*!

# Difficulty Levels

## Star Maze Division

---

**Standard  
Level**

$$\begin{array}{r} 4 \\ 8 \overline{) 32} \end{array}$$

**Advanced  
Level**

$$\begin{array}{r} 8 \text{ R } 5 \\ 7 \overline{) 61} \end{array}$$

**Master  
Level**

$$\begin{array}{r} 47 \\ 5 \overline{) 235} \end{array}$$

---

# Star Maze Game Description

## Object

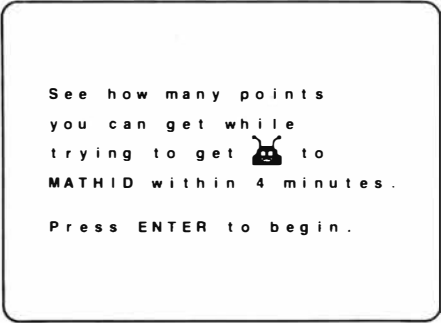
The object of *Star Maze*, a single player game, is to help a lost Thid return through the maze to its home planet Mathid. Along the way, you should try to accumulate as many points as possible within a selected time limit of two, three, or four minutes.


## Getting Started

To begin *Star Maze*, press 2 from the selection list at the beginning of the module. After the game's title sequence appears, select your difficulty level by pressing 1 for Standard, 2 for Advanced, or 3 for Master.

You can then choose whether or not to view the instructions for the game. If you type Y (yes) and press the ENTER key, the module displays a series of instruction screens. If you type N (no) and press ENTER, the "Choose a Time" screen appears.

Each time limit provides you with a different kind of challenge. The longer the time limit, the higher the point total you can accumulate. Press 2 for a two-minute time limit, 3 for a three-minute time limit, or 4 for a four-minute time limit. For example, if you press 4, the following screen appears.



```
See how many points
you can get while
trying to get  to
MATHID within 4 minutes.

Press ENTER to begin.
```

Press ENTER and the game begins.

## Play

Find Thid on the maze. You must move Thid from star to star along the maze to the planet Mathid. You earn points and the right to move Thid by answering problems correctly. The point value for each problem is determined by the color of the star on which Thid is resting. Blue stars are worth 5 points; yellow stars are 10 points; and the red star, a Goodid star, is worth 20 points. (See the section on Scoring.) Plan your trip to Mathid so that you can earn as many points as possible.

As soon as the first problem appears, the cursor flashes and the timer begins counting down from the chosen time limit. Using as little time as possible, type the correct answer and then press ENTER. You must press ENTER after typing the answer. The computer does not recognize the answer until you press ENTER.

When you enter the correct answer, a special musical tone sounds, the timer stops momentarily, your answer flashes on the screen, and your point total increases (see Scoring). You can now move Thid one star closer to Mathid or one star closer to a Goodid (a red) star.

To move Thid, use the arrow keys, ←, ↑, →, and, ↓. You can press the arrow keys with or without holding down the FCTN key. Each time you answer correctly, you score points, and you can move Thid one star closer to your destination.

When you type an incorrect answer, the module beeps, the timer stops momentarily, and the message "Try again" appears. If your second attempt is incorrect, the module beeps, the timer stops momentarily, and the module displays the correct answer. You do not earn points, and you cannot move Thid. You can score points and move Thid only after you correctly answer a problem. When the next problem appears, the cursor flashes, the timer resumes its countdown, and play continues.

During the game, if you fail to press any valid key within 20 seconds, the computer sounds a series of beeps to remind you to respond. After 15 more seconds, the computer again sounds the reminder beeps. If you still have not pressed a valid key after 10 additional seconds, the computer displays the correct answer.

**Caution:** Three yellow or blue Badid stars are hidden in the maze. If you maneuver Thid onto a Badid star, Thid bounces from star to star and finally stops on another star, farther from Mathid than before. Once Thid lands on a



Badid star, that star may lose its bad powers and become a normal star, or it again may act as a Badid star; you won't know until you land on it! After you encounter three Badid stars, no additional Badid stars will appear on the maze. Each time you play, the locations of the Badid stars change. You never know which stars are waiting to bounce Thid away from Mathid.

## Scoring

You earn points every time you correctly answer a problem. The color of the star on which Thid is resting determines the number of points you earn. Points are awarded as shown in the table below.

Star Color	Point Value
Blue	5
Yellow	10
Red	20

You have two chances to answer each problem. If you do not answer correctly, you do not score points.

The Goodid star, a red star, is a bonus star. At all times only one Goodid star appears on the maze. When you move Thid onto a Goodid star, point values of the blue and yellow stars are doubled for the next 15 seconds. During those 15 seconds, bonus point values are as follows.

Star Color	Bonus Point Value
Blue	10
Yellow	20

To achieve the highest possible game score, you must answer as many problems as you can during the bonus periods, and, you must visit Goodid stars often. During the bonus period, however, you cannot return to the Goodid star. If you do return, the bonus period ends immediately. When the bonus time expires, the location of the Goodid star changes. During normal play, you can move Thid to the Goodid stars as often as you like, but remember, you must get Thid to Mathid before time runs out.

## Ending the Game

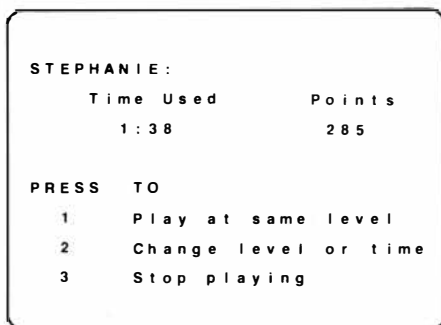
The game ends when one of the following events occurs:

1. You get Thid home safely to Mathid.
2. Your time limit runs out.

If you are successful in getting Thid home, note your point total and time. The next time you play, see if you can improve your score and/or decrease your time.

## Playing Another Game

When you end a game of *Star Maze*, the following screen appears.



If you press 1, another *Star Maze* game begins. That game uses the same difficulty level and time limit as the game you just played. If you press 2, the “Choose a Level” and the “Choose a Time” screens appear. You can then choose to play *Star Maze* at a different level and/or for a different time limit. Press 3 when you are finished playing *Star Maze*.

---

# Keyboard Guide

Special key functions programmed into *Star Maze* make the game more convenient to play. To enact one of the functions listed below, hold down the FCTN key and simultaneously press the desired function.

Function	Action
ENTER	Press this key during a game after you type an answer. The computer then checks your answer.  Press this key to continue to the next screen.  Press this key to proceed quickly through the beginning screens.
FCTN 3 (ERASE)	Press this key to erase the part of your answer that you entered last. ERASE works only before you press ENTER.
FCTN 4 (CLEAR)	Press this key to erase your entire answer. CLEAR works only before you press ENTER.
FCTN 5 (BEGIN)	Press this key to return to the “Choose a Level” screen to begin a new game.
FCTN 7 (AID)	Press this key any time you want to see the instructions. After the computer displays the instructions, it returns to where you were in the game when you pressed AID.
FCTN 8 (REDO)	Press this key to “redo” your level choice. The computer returns to the “Choose a Level” menu.
FCTN = (QUIT)	Press this key to return to the master title screen to end work on the module.
FCTN S, E, D, or X ← ↑ → ↓	Press the arrow keys to move Thid in <i>Star Maze</i> . The arrow keys work with or without the FCTN key.

---

## Scorecard

Players can use this scorecard to record their fastest times and scores achieved at each level of *Star Maze*.

### Standard Level

Name	Date	Time	Score

### Advanced Level

Name	Date	Time	Score

### Master Level

Name	Date	Time	Score

---

## Related Activities

You can use the following activities to expand interest in Star Maze into other related areas.

1. Players can keep track of their Star Maze times and scores for a specific level. Each player can graph his/her achievements by marking time on the X-axis and scores on the Y-axis and then plotting the coordinates on the graph.
2. Players can write science-fiction stories or plays.
3. Players can read science-fiction books.
4. Take a trip to an observatory or a planetarium to learn about astronomy.
5. Players can organize and compete in an ongoing Star Maze tournament. Times and scores for each level can be recorded on the scorecards found on page 11 of this Guide.
6. Visit a computer facility to learn more about computers.
7. Players can compile a personal dictionary of computer terms.
8. Players can think of other uses and game ideas for the computer.

---

# The Mathematics Action Games Series

Scott, Foresman has prepared a series of game modules for the Texas Instruments Home Computer. These modules provide practice in a variety of important mathematics skills that are taught in grades one through eight.

These colorful and animated games encompass a wide range of themes and include both competitive and non-competitive formats. Each game in the series has several difficulty levels. The series includes:

Ages 5-8

## **Frog Jump**

Putting numbers in order

## **Picture Parts**

Basic addition, subtraction, and multiplication

Ages 8-12

## **Pyramid Puzzler**

Multiplication facts and multiplication by 100 and 1000

## **Star Maze**

Division facts, division with remainders, and short division

Ages  
11-Adult

## **Number Bowling**

Decimals and fractions

## **Space Journey**

Percent

---

## Caring for the Module

Although the module is durable, handle it carefully. Keep it clean and dry, and avoid touching the recessed contacts.

Caution: The contents of a module can be damaged by static electricity discharges. Static electricity build-ups are likely to occur when the natural humidity is low (during winter or in areas with dry climates). To avoid damaging the module, touch any metal object (a doorknob, a desk lamp, etc.) before handling the module. Commercial preparations that reduce static build-up in carpets are available at hardware and office supply stores.

### In Case of Difficulty

Technical information about the Texas Instruments Home Computer and the modules can be found in the *User's Reference Guide*. You can solve several of the more common problems by reviewing the solutions listed below.

**1. Problem:** Everything is plugged in and yet nothing appears on the monitor.

**Solution:** Check to see that the switch on the front of the keyboard is pushed to the right and that the red light is on.

**2. Problem:** The module is not operating properly.

**Solution:** Press QUIT (FCTN =) to return to the master title screen. Remove the module, align it with the module opening, and carefully reinsert it. Press any key to make the title screen appear. In some instances, you may have to turn the computer off, wait several seconds, and then turn it on again.

**3. Problem:** The computer is behaving erratically because someone removed the module from the computer while it was being used.

**Solution:** Turn the computer console off, wait a few seconds, reinsert the module, and turn on the console. The computer should return to its normal operation.

---

# Software Media Limited Warranty

Scott, Foresman and Company extends this consumer warranty only to the original consumer purchaser.

## Warranty Coverage

This warranty covers the case components of the software package. The components include all cassette tapes, diskettes, plastics, containers, and all other hardware contained in this software package ("the Hardware"). This limited warranty does not extend to the programs contained in the software media and in the accompanying book materials ("the Programs").

The Hardware is warranted against malfunction due to defective materials or construction. **This warranty is void if the Hardware has been damaged by accident or unreasonable use, neglect, improper service or other causes not arising out of defects in material or construction.**

## Warranty Duration

The Hardware is warranted for a period of 90 days from the date of original purchase by the consumer.

## Warranty Disclaimers

**Any implied warranties arising out of this sale, including but not limited to the implied warranties of merchantability and fitness for a particular purpose, are limited in duration to the above 90 day period. Scott, Foresman and Company shall not be liable for loss of use of the Hardware or other incidental or consequential costs, expenses, or damages incurred by the consumer or any other user.**

Some states do not allow the exclusion or limitation of implied warranties or consequential damages, so the above limitations or exclusions may not apply to you in those states.

## Legal Remedies

This warranty gives you specific legal rights, and you may also have other rights that vary from state to state.

## Performance by Scott, Foresman Under Warranty

During the 90 day warranty period, defective Hardware will be replaced when it is returned postage prepaid with proof and date of purchase to your Scott, Foresman Electronic Publishing dealer. The replacement Hardware will be warranted for a period of 90 days from date of replacement. Other than the postage requirement, no charge will be made for replacement. Scott, Foresman and Company strongly recommends that you insure the Hardware for value prior to mailing.

## Important Notice of Disclaimer Regarding the Programs

The following should be read and understood before purchasing and/or using the software media.

Scott, Foresman and Company does not warrant the Programs will be free from error or will meet the specific requirements of the consumer. The consumer assumes complete responsibility for any decisions made or actions taken based on information obtained using the Programs. Any statements made concerning the utility of the Programs are not to be construed as express or implied warranties.

Scott, Foresman and Company makes no warranty, either express or implied, including but not limited to any implied warranties of merchantability and fitness for a particular purpose, regarding the Programs and makes all Programs available solely on an "as is" basis.

In no event shall Scott, Foresman and Company be liable to anyone for special, collateral, incidental, or consequential damages in connection with or arising out of the purchase or use of the programs, and the sole and exclusive liability of Scott, Foresman and Company, regardless of the form of action, shall not exceed the purchase price of the software media. Moreover, Scott, Foresman and Company shall not be liable for any claim of any kind whatsoever by any other party against the user of the Programs.



---

# Index

## A

About the module 4  
AID (FCTN 7) 10  
Advanced level 5, 6  
Age levels 4, 13  
Arrow keys 7, 10

## B

Badid stars 8  
BEGIN (FCTN 5) 10  
Blue stars 8, 9  
Bonus points 8, 9

## C

Caring for the module 14  
Choose a Level menu 6, 10  
CLEAR (FCTN 4) 10

## D

Difficulty levels 5, 6  
Directions 4, 6–9  
Division skills 5

## E

Ending the game 9  
ENTER 7, 10  
ERASE (FCTN 3) 10

## F

FCTN key 4, 10  
Function keys 10

## G

Getting started 6, 7  
Goodid star 8, 9  
Grade level 4

## H

Hardware requirements 4

## I

In case of difficulty 14  
Incorrect answers 8  
Instructions 4, 6–9

## K

Key functions 10  
Keyboard guide 10

## L

Levels of difficulty 5,6

## M

Master Level 5, 6  
Math skills 5  
Mathid 6–9  
Module description 4  
Module operation 4, 14

## O

Object of game 6

## P

Planet Mathid 6–9  
Playing another game 9  
Playing the game 7, 8  
Point values of stars 8, 9  
Problems with module operation 14

## Q

QUIT (FCTN =) 10, 14

## R

Red star 8, 9  
REDO (FCTN 8) 10  
Related activities 12

## S

Scorecard 11  
Scoring 8, 9  
Skills 5  
Standard Level 5, 6  
Static electricity 14

## T

Thid 6, 7  
Timing 8, 9

## V

Valid keys 8

## W

Warranty 15

## Y

Yellow stars 8, 9



**Scott, Foresman**  
Electronic Publishing



31184